



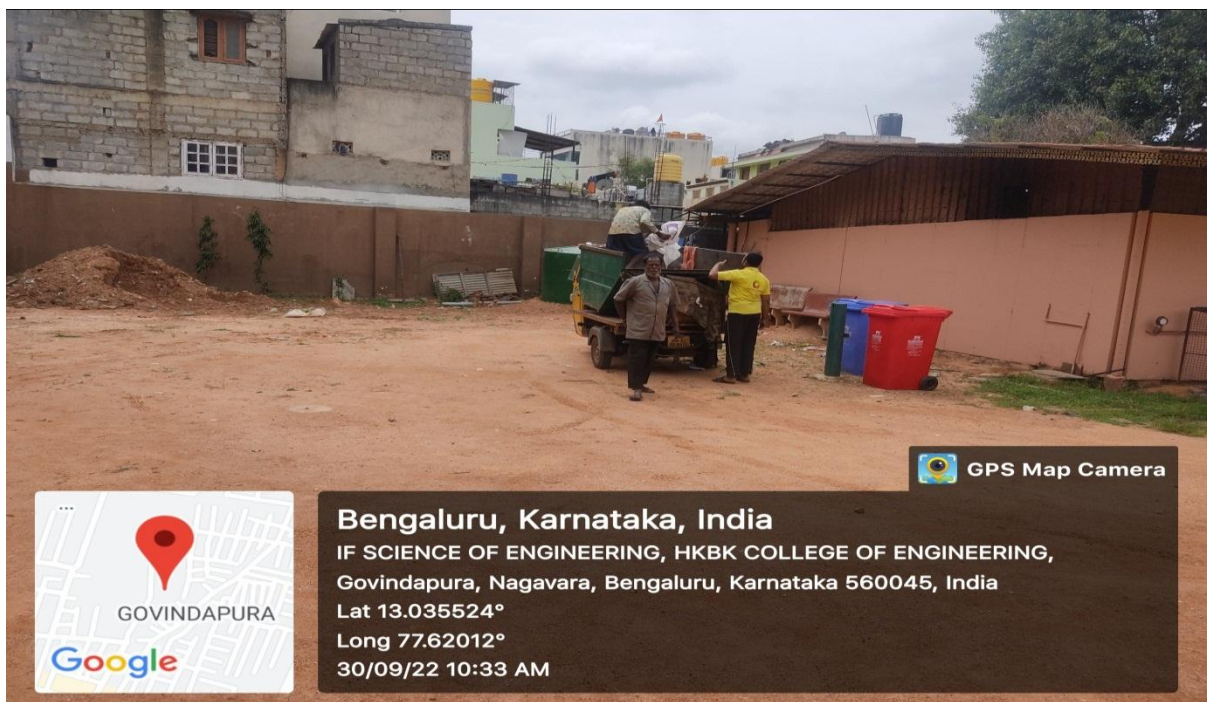
HKBK COLLEGE OF ENGINEERING

7.1.3 Management of Degradable and Non Degradable Waste

Dry and Wet Waste Management: The institute has installed dry and wet waste collection at the source by placing collection Bins.



Waste Collected by City Civic Body BBMP



E-Waste Disposal: The institute has set up the central e-waste collection facility for students and staff. At the institute level, e-waste is centrally identified, collected and disposed in collaboration with government approved e-waste processing organization.

HKBK COLLEGE OF ENGINEERING 25 YEARS OF EXCELLENCE E-WASTE SOCIAL

INAUGURATION OF E-WASTE COLLECTION CENTRE

Organized By DEPARTMENT OF ECE
In Association with E - Waste Social Pvt. Ltd. & Hulladek Recycling Pvt. Ltd.

Session on **Why E-Waste management is a need of the hour?**

C.M. Faiz Mohammed
Director, HKBKGI

Dr. Tabassum Ara
Principal, HKBKCE

Prof. Hussain Ahmed
IQAC Head, HKBKCE

Inauguration By

Ms. Iram Maimuna
Resource Person
Director, E-Waste Social Pvt. Ltd.

Dr. R. Latha
Program Convener
Head, Dept. of ECE

Mr. Nandan Mall
Resource Person
Founder and CMD
Hulladek Recycling Pvt. Ltd.

Faculty Coordinators:
Prof. Syeda Husna Mohammadi
Prof. Sufia Banu
Dr. Surendiran J
Prof. K.H. Yogananda Raj Urs

27th January 2023
3:30pm To 4:30pm
D-Block Seminar Hall

